

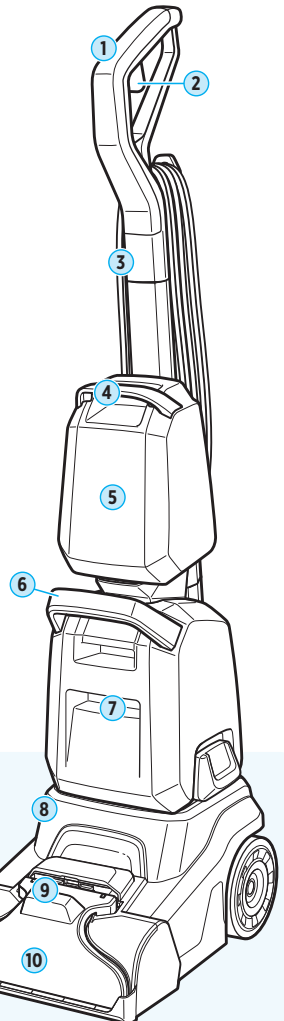


# POWERFORCE™ PET

FULL-SIZE CARPET & UPHOLSTERY CLEANER

MODEL 4059F

- What's in the Box? ..... 3
- Assembly ..... 3
- Filling the Clean Water Tank..... 4
- Cleaning Your Carpet..... 5
- Cleaning with the Hose and Tool ..... 6
- Cleaning the Machine with Self-Cleaning  
Tough Stain Tool ..... 7
- Emptying the Dirty Water Tank..... 8
- After-Cleaning Care..... 9
- Replacing the Belt & Brush Roll ..... 10
- Storing Your Machine..... 11
- Troubleshooting..... 11
- Warranty ..... 11



## Product Overview

- 1. Upper Handle
- 2. Spray Trigger
- 3. Middle Handle
- 4. Clean Water Tank Handle
- 5. Clean Water Tank
- 6. Dirty Water Tank Handle
- 7. Dirty Water Tank
- 8. Lower Body
- 9. Hose Cover
- 10. Nozzle

SYMBOL	EXPLANATION
	Caution.
	Read operator's manual.
	Risk of fire.
	Risk of electric shock.
	For indoor use only.
	Do not overwet carpet. Use only on carpet moistened by the cleaning process.
	Use only BISSELL® cleaning formulas intended for use with this machine.

SYMBOL	EXPLANATION
	Do not use on wet surfaces.
	Disconnect power before servicing.
	Protection against moving parts.
	Do not freeze.
	Motorized cleaning head for water suction cleaning.
	Warning: Slippery surface.
	Paper

## IMPORTANT SAFETY INSTRUCTIONS

### READ ALL INSTRUCTIONS BEFORE USING YOUR APPLIANCE.

When using an electrical appliance, basic precautions should be observed, including the following:

### **WARNING TO REDUCE THE RISK OF FIRE, ELECTRIC SHOCK OR INJURY:**

- This appliance is not intended for use by persons (including children) with reduced physical, sensory or mental capabilities, or lack of experience and knowledge, unless they have been given supervision or instruction concerning use of the appliance by a person responsible for their safety.
- Children should be supervised to ensure that they do not play with the appliance.
- Plastic film can be dangerous. To avoid danger of suffocation, keep away from children.
- Keep hair, loose clothing, fingers, and all parts of body away from openings and moving parts of the appliance and its accessories.
- Floor slippery when wet.
- The plug must be removed from the socket-outlet before cleaning or maintaining the appliance, and if your appliance has an accessory tool with a moving brush, before connecting or disconnecting the tool.
- Use only as described in this user guide.
- Use only manufacturer's recommended attachments.
- If appliance is not working as it should, has been dropped, damaged, left outdoors, or dropped into water; do not attempt to operate it and have it repaired at an authorised service center.
- Do not put any object into openings.
- Do not use with any opening blocked; keep free of dust, lint, hair, and anything that may reduce air flow.
- Use extra care when cleaning on stairs.
- Do not use to pick up flammable or combustible liquids, such as petroleum, or use in areas where they may be present.

- Do not pick up anything that is burning or smoking, such as cigarettes, matches or hot ashes.
- Do not pick up toxic material (chlorine bleach, ammonia, drain cleaner, etc.).
- Do not use appliance in an enclosed space filled with vapours given off by oil base paint, paint thinner, some moth-proofing substances, flammable dust, or other explosive or toxic vapours.
- If the supply cable is damaged, it must be replaced by the manufacturer, its service agent or similarly qualified person in order to avoid a hazard.
- Do not pull or carry by cable, use cable as a handle, close door on cable, or pull cable around sharp edges or corners. Keep cable away from heated surfaces.
- A hazard may occur if the appliance runs over the supply cord.
- The appliance has to be unplugged after use and before carrying out user maintenance on the appliance.
- Do not leave appliance when plugged in. Unplug from outlet when not in use and before servicing.
- To unplug, grasp the plug, not the cable.
- Do not handle plug or appliance with wet hands.
- Turn off all controls before unplugging.
- If the appliance has a hand held accessory like pet brush, motor driven head, etc., the user shall avoid entrapment.
- Use indoors only.
- Always connect to a properly earthed electrical socket.
- Do not modify earthed plug.
- Liquid must not be directed towards equipment containing electrical components.
- Use only the type and amount of liquids specified under the operations section of this guide.






## SAVE THESE INSTRUCTIONS


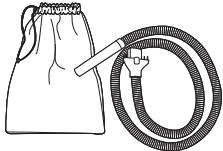
**ORIGINAL INSTRUCTIONS. FOR OPERATION ON A 220-240 VOLT A.C. 50-60 HZ POWER SUPPLY ONLY. THIS MODEL IS FOR HOUSEHOLD USE ONLY.**

## IMPORTANT INFORMATION

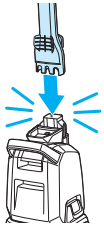
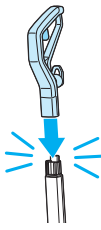
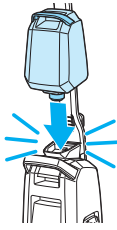
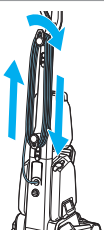
- To reduce the risk of a leaking condition, do not store where freezing may occur. Damage to internal components may result.
- Plastic tanks are not dishwasher safe. Do not put tanks in dishwasher.
- Do not turn ON your appliance until you are familiar with all instructions and operating procedures.
- To reduce the risk of a leaking condition, do not store where freezing may occur. Damage to internal components may result.
- Brush roll continues to turn while product is turned on. To avoid damage to carpet, rugs, furniture and flooring, avoid tipping cleaner or setting it on furniture, fringed area rugs, or carpeted stairs during tool use.
- With brush roll on, do not allow cleaner to sit in one location for an extended period of time, as damage to floor can result.

## What's in the Box?

				
Upper Handle	Middle Handle	Dirty Water Tank and Lower Body	Clean Water Tank	BISSELL® Trial Formulas

	
Self-Cleaning Tough Stain Tool	Accessory Bag and Hose

## Assembly

		
<b>1.</b> Slide middle handle into lower body until it “clicks” into place.	<b>2.</b> Slide upper handle into middle handle until it “clicks” into place.	<b>3.</b> Align clean water tank with grooves on machine and push down until it “clicks” into place.
		
<b>4.</b> Wrap power cord around cord wraps.		

# Filling the Clean Water Tank



This machine is compatible with BISSELL® formulas made for upright carpet cleaners. For optimal performance, use genuine BISSELL formulas in your machine. Other formulas or household cleaners may cause defects or damage to the machine.

<p><b>1.</b> Choose your formula.* Scan the QR code with your smartphone camera or visit <a href="http://global.BISSELL.com">global.BISSELL.com</a> for formulas.</p>	<p><b>2.</b> Lift the clean water tank up to remove from the machine. Unscrew the yellow cap to add water.</p>	<p><b>3.</b> Fill the tank with warm tap water (140°F/60°C MAX) to the <b>WATER</b> line. Do not use boiling water. Do not heat water or tank in microwave.</p>

**Note: BISSELL formula and BISSELL ANTIBACTERIAL formula have different fill lines.**

## Adding BISSELL Formula

<p><b>4.</b> Add formula to <b>FORMULA</b> fill line. <b>Optional:</b> Add 1.5 oz of OXY Boost.</p>	<p><b>5.</b> Screw the cap back on. Secure tightly.</p>	<p><b>6.</b> Push clean tank down. Ensure it is seated securely on the base.</p>

## Adding BISSELL easyfill™ ANTIBACTERIAL Formula

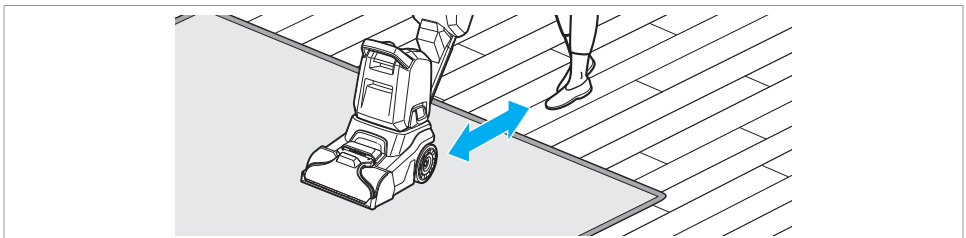
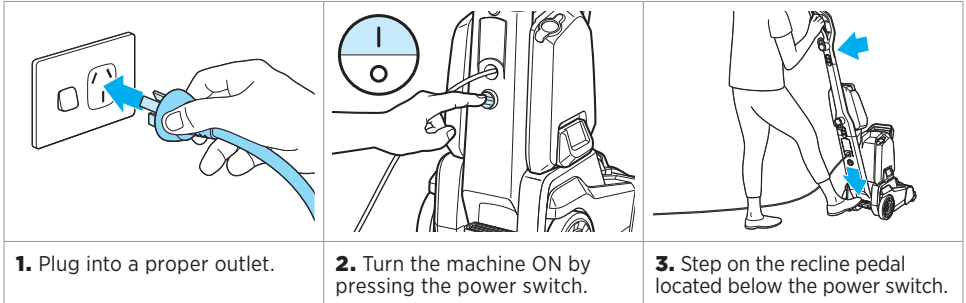
<p><b>4.</b> Screw the cap back on. Secure tightly.</p>	<p><b>5.</b> Add ANTIBACTERIAL formula to <b>ANTIBACTERIAL FORMULA</b> line. <b>Note:</b> Not compatible with OXY Boost.</p>	<p><b>6.</b> Push clean tank down. Ensure it is seated securely on the base.</p>

\*Compatible BISSELL formulas include: Clean + Refresh, PET Stain & Odour, PRO MAX Clean + Protect, PET PRO OXY Urine Eliminator, PET Stain Pretreat, PET PRO OXY Stain Destroyer, PET Pretreat + Sanitize, Pet Stain & Odour + Antibacterial, OXY Boost, PET OXY Boost

Certain trademarks used under license from The Procter & Gamble Company or its affiliates.

## Tips Before Cleaning

- Use a dry vacuum cleaner over area before using your upright carpet & upholstery cleaner.
- Remove any large, solid debris before wet cleaning.
- To prevent damage to Berber carpets, avoid repeated strokes in the same area.
- Before cleaning area rugs, check the manufacturer's tag and test an inconspicuous spot on the rug for colorfastness. Don't use on silk or delicate rugs.
- It is common to refill the clean water tank and empty the dirty water tank multiple times during cleaning. Room size and cleaning speed both affect how often the tank may need to be refilled and/or emptied.
- Ensure clean water tank is full. Water might not come out of the nozzle if water level is too low.
- For a quicker dry time, release trigger and make "dry passes" by pushing machine forward and back across carpet until water can no longer be seen through the nozzle.



**4.** Make cleaning passes following the steps below. Repeat these passes until solution being pulled up appears clean. Repeat dry passes (with the spray trigger released) until there is a noticeable reduction in the amount of liquid being pulled up.

### With BISSELL Formula

Make 4 cleaning passes:

1. Forward with the trigger pressed.
2. Backward with the trigger released.
3. Repeat step 1.
4. Repeat step 2.

### With BISSELL ANTIBACTERIAL Formula

1. Hold Spray Trigger

- 1 pass forward
- 1 pass back
- 1 pass forward
- 1 pass back

For full benefit of ANTIBACTERIAL formula, do not make any dry passes. Dry time may be longer.



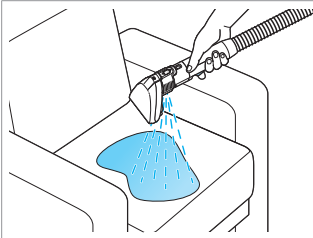
## Tips Before Cleaning

- Check for colorfastness in an inconspicuous place before cleaning larger area.
- If possible, check upholstery stuffing. Colored stuffing may bleed through fabric when wet.
- Vacuum thoroughly to pick up loose debris and pet hair.
- Check manufacturer's tag before cleaning. Do not use on velvet or silk.
- The brush roll remains on while cleaning with the hose and tool. Ensure the machine remains in an upright position to minimize the potential for damage to the machine. Do not allow the machine to sit in one location for an extended period of time, as this can result in damage to the floor.

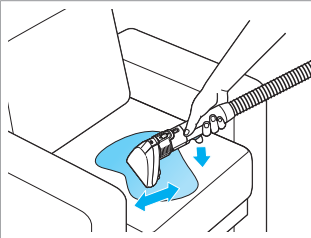
<p><b>1.</b> Lift the accessory hose door on top of foot on the front of the machine. The door flips toward the machine to open.</p>	<p><b>2.</b> Insert the hose until it “clicks” into place. Be sure the colored hose release clip is facing out, away from machine.</p>	<p><b>3.</b> Choose your cleaning method: Use the bristle block for everyday soft surface cleaning, or the rubberized block (not included) to remove embedded pet hair and debris.</p>
<p><b>4.</b> Pull bottom latch to release attachment from tool.</p>	<p><b>5.</b> Insert your preferred tool attachment until it “clicks” into place.</p>	<p><b>6.</b> Attach the tool to the end of the hose until it “clicks” into place.</p>
<p><b>7.</b> Slide tool lever up to ensure tool is in SPRAY mode.</p>	<p><b>8.</b> Plug into a proper outlet.</p>	<p><b>9.</b> Press the power button to turn the machine ON.</p>

CONTINUED ON NEXT PAGE ➔

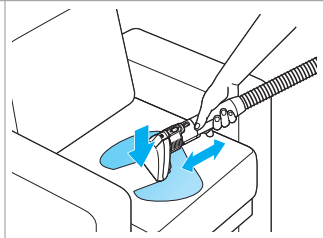
## Cleaning with the Hose and Tool (continued)



**10.** While holding tool above desired area, press and hold trigger to spray solution.

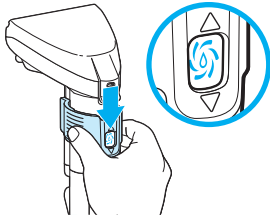


**11.** Release spray trigger and gently scrub stain using bristles.

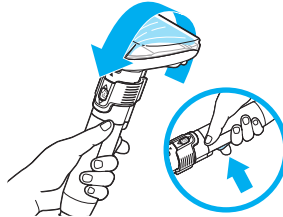


**12.** With trigger released, press tool firmly against surface and pull towards you to remove stain. Repeat as needed.

## Cleaning the Machine with Self-Cleaning Tough Stain Tool

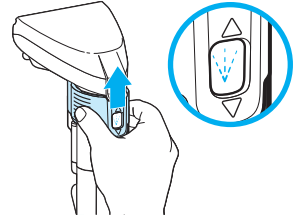


**1.** Turn machine ON. Position hand as shown using grip marks on tool. Slide tool lever down for CLEANOUT mode. Ensure there is water and formula in the clean water tank.



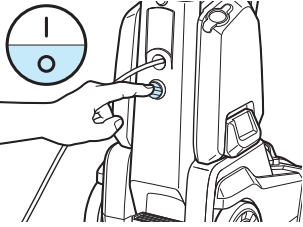
**2.** Press trigger to activate CLEANOUT function. Solution will flow through tool and hose.

**Tip:** For a more thorough rinse, place suction nozzle on soft surface and tilt forward/backward.

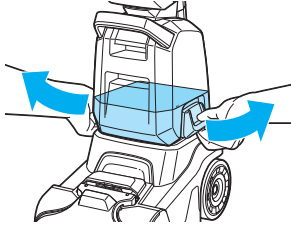


**3.** To continue cleaning with your machine, slide the tool's lever upward to return to SPRAY mode.

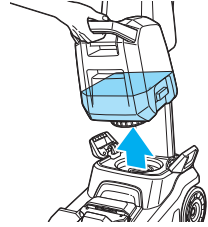
# Emptying the Dirty Water Tank



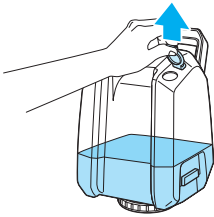
**1.** Turn OFF and unplug your machine.



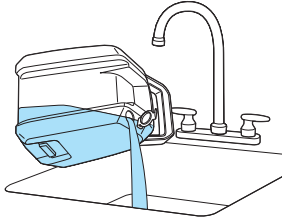
**2.** Release dirty water tank by pulling the latches on the side up and out.



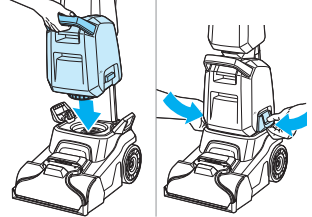
**3.** Carefully remove tank by lifting up on the dirty water tank handle.



**4.** Lift tab on the top of the tank to open.



**5.** Empty the dirty water tank and refill the clean water tank as needed. Changes to motor noise and observed decrease in suction/water reclamation from the floor indicate that the machine's float has engaged. This prevents the dirty water tank from overfilling and leaking, which could harm the motor of the machine. To resolve, remove and empty dirty water tank. If not closed properly, you might experience water leaking, low suction, and/or excessive foaming.

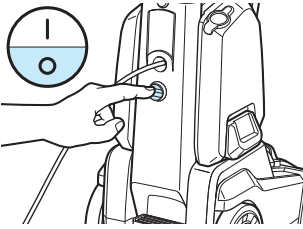


**6.** To continue cleaning, align the bottom of the tank to the base and secure into place with latches.

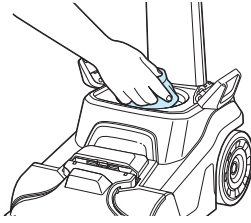
**⚠ WARNING** To reduce the risk of fire, electric shock or injury, turn power OFF and disconnect plug from electrical outlet before performing maintenance or troubleshooting.



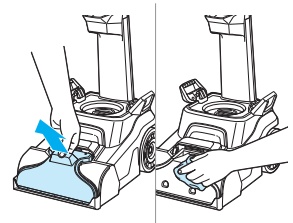
## After-Cleaning Care



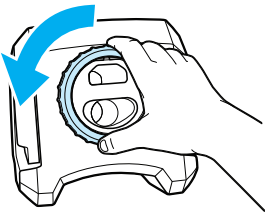
**1.** Turn OFF and unplug your machine. Follow steps 2-3 on page 8 to remove the dirty water tank.



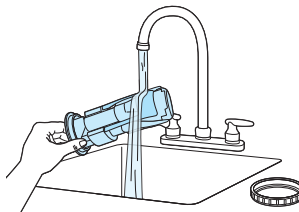
**2.** Use a cloth to wipe debris from the red filter located beneath where the dirty water tank attaches.



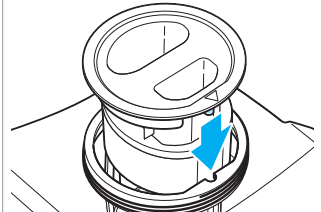
**3.** Grab the top of the nozzle and pull it up and away from the machine. Use cloth to wipe clean.



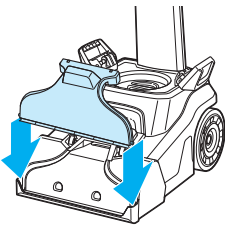
**4.** Once steps 4-5 on page 8 are complete, ensure the dirty water tank is empty by gently unscrewing and removing the ring at the bottom of the tank.



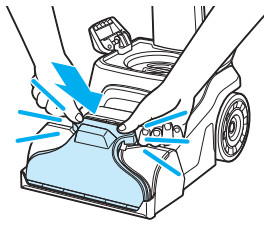
**5.** Clean and rinse debris from the float. Keeping the float clean prevents the dirty water tank from overflowing and ensures the seal stays intact.



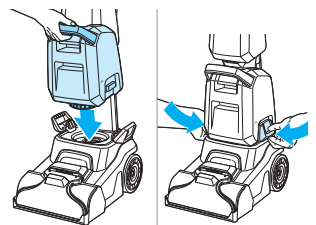
**6.** Once clean, assemble by aligning the arrow on the float with the notch on the tank. Then, return the ring and twist to lock. Make sure it's fully aligned, so water doesn't leak.



**7.** To reinstall the nozzle, align the ribs on the ends of the nozzle to the machine, then lower the nozzle into place.



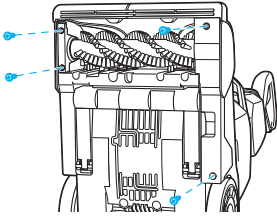
**8.** With the bottom of the nozzle in place, lower the top of the nozzle onto the machine, ensuring it fits snugly.



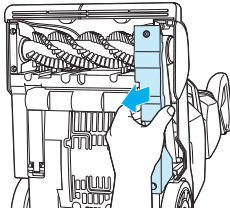
**9.** Once dirty water tank is dry, align the bottom of the tank to the base and secure into place with latches.

**⚠ WARNING** To reduce the risk of fire, electrical shock or injury, turn power OFF and disconnect plug from electrical outlet before performing maintenance or troubleshooting.

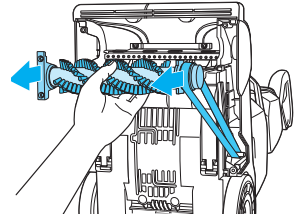
## Replacing the Belt & Brush Roll



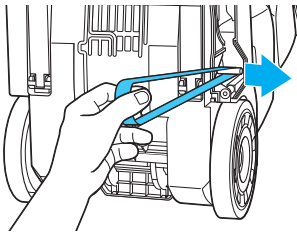
**1.** Turn OFF and unplug your machine. Use a Phillips-head screwdriver to remove the 4 screws.



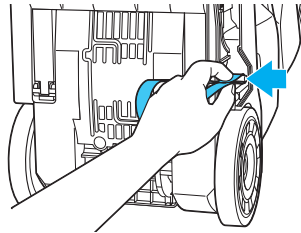
**2.** Remove belt cover.



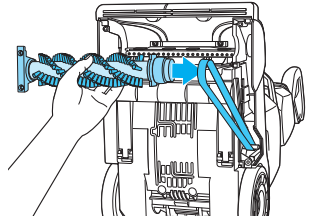
**3.** Pull brush roll out and remove belt from track.



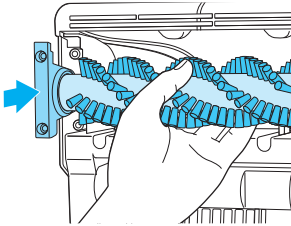
**4.** Pull belt off of motor shaft.



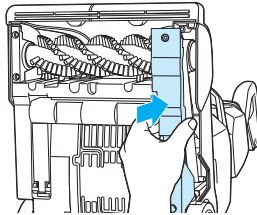
**5.** Wrap new belt around motor shaft.



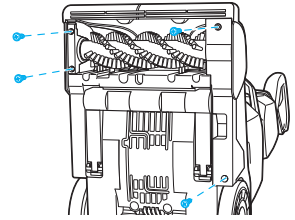
**6.** Put the belt on the brush roll track, ensuring it is centered within the ridges. Put the brush roll back into position.



**7.** Align brush roll mount to screw post.



**8.** Reposition belt cover.



**9.** Reinstall 4 screws.

**Note:** Other maintenance or service not included in this manual should be performed by an authorized service representative.

**⚠ WARNING** To reduce the risk of fire, electric shock or injury, turn power OFF and disconnect plug from electrical outlet before performing maintenance or troubleshooting.

## Storing Your Machine

Store your machine in a protected, dry area. When finished using the product, wrap cord around cord wrap for storage.

## Troubleshooting

Problem	Possible Cause	Remedies
Reduced spray OR no spray	Clean water tank may be empty.	Refill tank.
	Clean water tank may not be seated completely.	Turn power off. Remove and reseal tank.
	Water level of clean water tank may be too low.	Refill tank.
	Pump may have lost prime in hose cleaning mode.	Hold end of hose below water level in tank to prime.
Loss of suction power	Dirty water tank may not be seated properly.	Reseat dirty water tank so it fits properly.
	Dirty water tank is full.	Empty dirty water tank.
	Rubber tab on dirty water tank is not sealed tight.	Check rubber tab on dirty water tank and press firmly on all edges to secure tightly.
	Nozzle not installed correctly.	Remove and reinstall nozzle.
No power	Outlet may not be active.	Try plugging in a different device that uses a grounded outlet to test for power from outlet.
Leaking dirty water tank	Tank ring not installed properly.	Remove tank. Remove and reinstall tank ring.
	Dirty water tank is full.	Empty dirty water tank
	Dirty water tank is damaged.	Contact BISSELL Consumer Care.
Brush roll not turning	Broken or damage belt.	Replace belt by following steps on page 8.
	Seized brush roll.	Turn off and unplug the machine. Remove the belt. Test brush roll by spinning it manually. If it does not spin freely, replace with a new one.

**NOTICE** To reduce the risk of a leaking condition, do not store unit where freezing may occur. Damage to internal components may result.

# Limited Warranty

This limited warranty is provided by BISSELL® International Trading Company B.V. ("BISSELL") and applies in Australia and New Zealand. It gives you specific rights. It is offered as an additional benefit to your rights under law. You also have other rights under The Australian Consumer Law or New Zealand Consumer Laws, whichever applies to you. You can find out about your legal rights and remedies by contacting your local consumer advice service. Nothing in this warranty will replace or lessen any of your legal rights or remedies. If you need additional instruction regarding this warranty or have questions regarding what it may cover, please contact BISSELL Consumer Care or contact your local distributor.

This warranty is given to the current owner of the product with the original sales receipt. The original sales receipt must include the product(s) purchased, the date purchased, and which country it was purchased from new. You must be able to evidence the date of purchase and show the product was purchased in Australia or New Zealand to submit a claim under this warranty. You will receive the warranty that is applicable to the country where your product was originally purchased, as shown on the original sales receipt. If you use the product outside of the country where it was purchased, your warranty may be void in BISSELL's sole discretion. It may be necessary to obtain some of your personal information, such as a mailing address, to fulfill the terms of this warranty. Any personal data will be handled pursuant to BISSELL's Privacy Policy, which can be found at [global.BISSELL.com/privacy-policy](http://global.BISSELL.com/privacy-policy).

## Limited Two-Year Warranty

For two years from the date of purchase by the original purchaser, subject to the \*EXCEPTIONS AND EXCLUSIONS identified below, BISSELL will repair or replace (with new, refurbished, lightly used, or remanufactured components or products), at BISSELL's option, free of charge, any defective or malfunctioning part or product.

BISSELL recommends that the original packaging and original proof of purchase with the date of purchase and country where purchased be kept for the duration of the warranty period in case you want to redeem the warranty during the warranty period. Keeping the original packaging will assist with any necessary re-packaging and transportation but is not a condition of the warranty.

If your product is replaced by BISSELL under this warranty, then the new item will benefit from the remainder of the term of this warranty (calculated from the date of the original purchase). The period of this warranty shall not be extended whether or not your product is repaired or replaced.

## \*Conditions of Warranty

This warranty applies to products used for personal domestic use and not commercial or hire purposes. Consumable components and attachments such as filters, belts, shells, water tanks, scraping strips, brushes, and mop pads, which must be replaced or serviced by the user from time to time, are not covered by this warranty.

This warranty does not apply to any defect arising from fair wear and tear, including but not limited to the battery discharging time shortening due to the aging or use. Damage or malfunction caused by the user or any third party whether as a result of accident, negligence, abuse, neglect, or any other use not in accordance with the user guide is not covered by this warranty. An unauthorised repair (or attempted repair) may void this warranty whether or not damage has been caused by that repair/attempt. Removing or tampering with the Product Rating Label on the product or rendering it illegible will void this warranty.

Except as set out below, BISSELL and its distributors are not liable for any loss or damage that is not foreseeable or for incidental or consequential damages of any nature associated with the use of this product including without limitation loss of profit, loss of business, business interruption, loss of opportunity, distress, inconvenience, or disappointment. Except as set out below, BISSELL's liability will not exceed the purchase price of the product.

BISSELL does not exclude or limit in any way its liability for (a) death or personal injury caused by our negligence or the negligence of our employees, agents or subcontractors; (b) fraud or fraudulent misrepresentation; (c) or for any other matter which cannot be excluded or limited under law.

To make a claim under this warranty contact BISSELL Australia PTY LTD (details below). Contact BISSELL prior to returning any goods. Where agreed, BISSELL will reimburse reasonable postage / handling costs (if any) for returning goods to BISSELL. To claim expenses incurred in making a claim under this warranty please provide BISSELL with a copy of the receipt of the expenses by email or post.

For Australian Consumers Only: Our goods come with guarantees that cannot be excluded under the Australian Consumer Law. You are entitled to a replacement or refund for a major failure and compensation for any other reasonably foreseeable loss or damage. You are also entitled to have the goods repaired or replaced if the goods fail to be of acceptable quality and the failure does not amount to a major failure.

## Important Notes

Please keep your original sales receipt. It provides proof of the date of purchase and where it was purchased in the event of a warranty claim. See warranty for details.

Please note that using your BISSELL machine outside of its country of original purchase and/or use with a power converter may damage your BISSELL machine and damage caused by mismatched power voltage will not be covered by your warranty.

Please note that putting vinegar, bleach, dish soap, detergent, homemade soap, and other non-BISSELL products in your BISSELL machine may damage your BISSELL machine. Damage caused by using non-BISSELL products in your machine will not be covered by your warranty.

## Consumer Care

If your BISSELL product should require service or to claim under our limited guarantee, please contact us.



### Australia

Telephone: 1300 247 735  
Website: [BISSELL.com.au](http://BISSELL.com.au)  
Address: 789 Springvale Road,  
Mulgrave, Victoria 3170  
Email: [consumercareau@bissell.com](mailto:consumercareau@bissell.com)



### New Zealand

Telephone: 0800 247 735  
Website: [BISSELL.co.nz](http://BISSELL.co.nz)  
Address: 789 Springvale Road,  
Mulgrave, Victoria 3170  
Email: [consumercarenz@bissell.com](mailto:consumercarenz@bissell.com)

