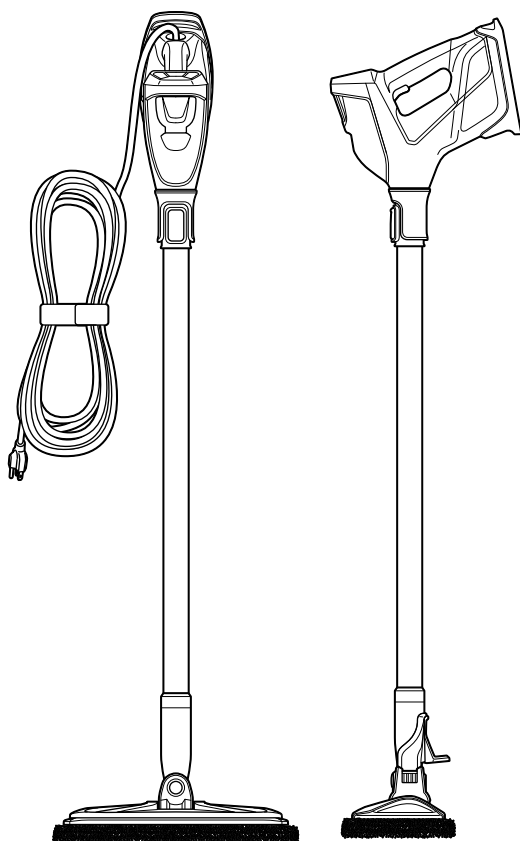




POWERFRESH[®] SLIM STEAM MOP

USER GUIDE
2233F SERIES



IMPORTANT SAFETY INSTRUCTIONS

READ ALL INSTRUCTIONS BEFORE USING YOUR APPLIANCE.

Unplug from outlet when not in use and before conducting maintenance. When using an electrical appliance, basic precautions should be observed, including the following:

WARNING

TO REDUCE THE RISK OF FIRE, ELECTRIC SHOCK, OR INJURY:

- » This appliance is not intended for use by persons (including children) with reduced physical, sensory, or mental capabilities, or lack of experience and knowledge, unless they have been given supervision or instruction concerning use of the appliance by a person responsible for their safety.
- » Children should be supervised to ensure that they do not play with the appliance.
- » Keep hair, loose clothing, fingers, and all parts of body away from openings and moving parts of the appliance and its accessories.
- » Unplug from electrical socket when not in use, before cleaning, maintaining, or servicing the appliance, and if your appliance has an accessory tool with a moving brush, before connecting or disconnecting the tool.
- » If the supply cable is damaged, it must be replaced by the manufacturer, its service agent, or similarly qualified person in order to avoid a hazard.
- » Do not run appliance over cable.
- » Plastic film can be dangerous. To avoid danger of suffocation, keep away from children.
- » Use only as described in this user guide.
- » Use only manufacturer's recommended attachments.
- » Do not immerse in water or liquid.
- » If appliance is not working as it should, has been dropped, damaged, left outdoors, or dropped into water; do not attempt to operate it and have it repaired at an authorised service center.
- » Do not put any object into openings.
- » Do not use with any opening blocked; keep free of dust, lint, hair, and anything that may reduce air flow.
- » Use extra care when cleaning on stairs.
- » Do not use to pick up flammable or combustible liquids, such as petroleum, or use in areas where they may be present.
- » Do not pick up toxic material (chlorine bleach, ammonia, drain cleaner, etc.).
- » Do not use appliance in an enclosed space filled with vapours given off by oil base paint, paint thinner, some moth-proofing substances, flammable dust, or other explosive or toxic vapours.
- » Do not pick up hard or sharp objects such as glass, nails, screws, coins, etc.
- » Keep appliance on a level surface.
- » Do not pick up anything that is burning or smoking, such as cigarettes, matches, or hot ashes.
- » If your appliance has a motorized brush roll, do not leave machine running in the same spot without the handle fully upright.
- » Do not leave appliance when plugged in.
- » Do not use with damaged cable or plug.
- » Do not pull or carry by cable, use cable as a handle, close door on cable, or pull cable around sharp edges or corners.
- » Keep cable away from heated surfaces.
- » To unplug, grasp the plug, not the cable.
- » Do not handle plug or appliance with wet hands.
- » Turn off all controls before unplugging.
- » Hold plug when rewinding onto cable reel. Do not allow plug to whip when rewinding.
- » Do not use outdoors or on wet surfaces.
- » Always connect to a properly earthed electrical socket.
- » The appliance is not to be used if it has been dropped, if there are visible signs of damage or if it is leaking.
- » Keep the appliance out of reach of children when it is energised or cooling down.
- » The foot surfaces are liable to get hot during use.
- » Do not direct steam at people, animals, or equipment containing electrical components.
- » Do not use on leather, wax polished furniture or floors, synthetic fabrics, velvet, or other delicate, steam-sensitive materials.
- » Always turn OFF vacuum mode if you encounter liquid on the floor.
- » Do not leave the appliance unattended while it is connected to the supply mains.
- » Do not open the filling aperture during use.

WARNING

SURFACE MAY BE HOT. AVOID CONTACT.



**THIS SYMBOL MEANS
WARNING: DANGER OF SCALDING**

SAVE THESE INSTRUCTIONS

FOR OPERATION ON A 220-240 VOLT A.C. 50-60 HZ POWER SUPPLY ONLY.

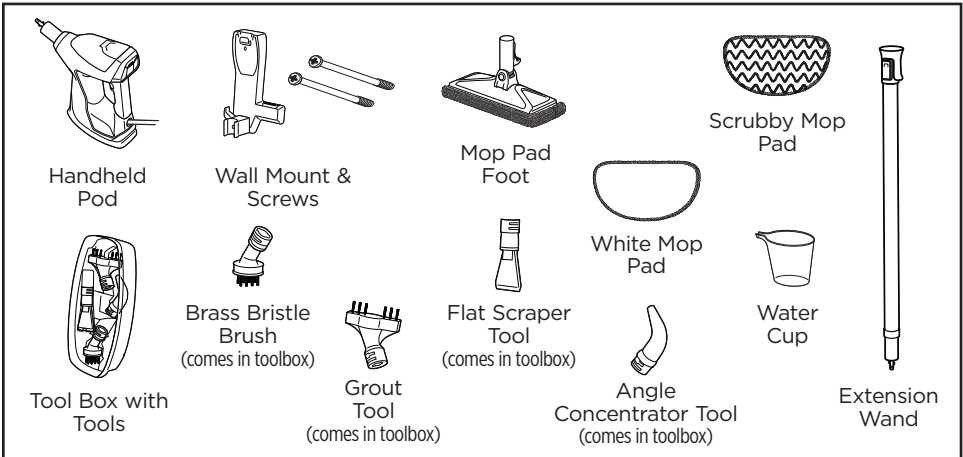
This model is for household use only.

Thanks for buying a BISSELL PowerFresh® Slim Steam Mop

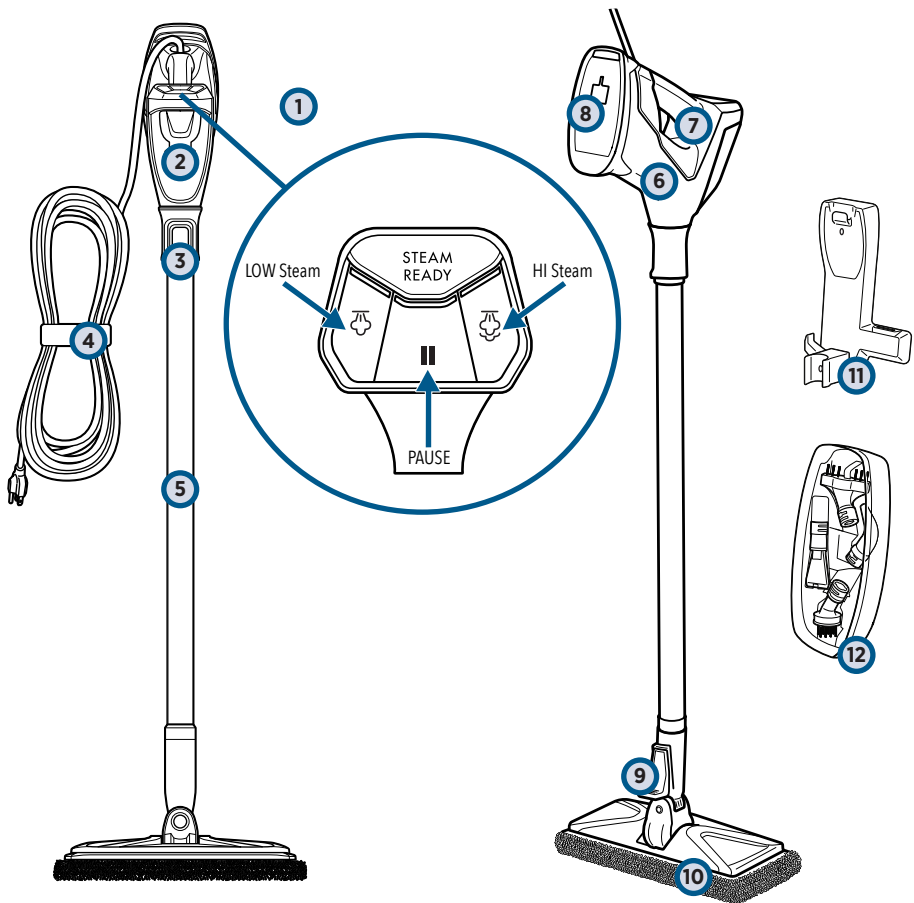
Your steam mop needs a little assembly before you can put it to work, so flip to page 5 and let's get started!

Safety Instructions	2	Maintenance & Care	11-13
Product View	4	Troubleshooting	14
Assembly	5	Guarantee	15
Operations	6-10	Service	15

What's In The Box?



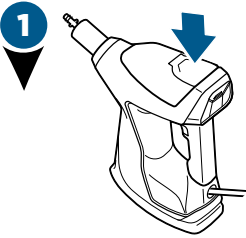
Getting to Know Your Steam Mop



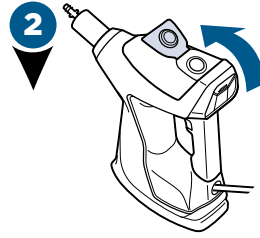
- | | |
|-------------------------------|--------------------------------|
| 1 SmartSet Steam Control | 7 Steam Trigger |
| 2 Easy Fill Water Tank | 8 Wall Mount Storage Clip Area |
| 3 Handheld Pod Release Button | 9 Extension Wand Release Pedal |
| 4 Power Cable with Wrap Strap | 10 Mop Pad Foot |
| 5 Extension Wand | 11 Wall Mount |
| 6 Handheld Pod | 12 Tool Box |

NOTE: Tool Box stores Brass Bristle Brush, Angle Concentrator Tool, Grout Tool, and Flat Scraper Tool.

Filling Your Water Tank



The Water Tank is located on the top of the Handheld Pod.



Pull the Water Tank cap straight up to open.



Use Water Cup provided and fill with distilled or demineralized water, recommended in place of tap water.

Close the Water Tank cap after filling.

A few notes about filling the Water Tank:

- The Water Tank's capacity is 350 mL (12 oz).

DO NOT USE CHEMICALS IN THE WATER TANK OF YOUR POWERFRESH® SLIM STEAM MOP.

- Other solutions may harm the machine and void the guarantee.

NOTE: Use of distilled water or demineralized water is recommended to prolong the life of your steam mop. To add a fresh scent as you clean, try BISELL demineralized waters in various scents like Citrus, Eucalyptus Mint, and Spring Breeze.

NOTE: Never put descaling, alcoholic, eucalyptus oil, or detergent products into the steam cleaner, as this may damage it or make it unsafe for use.

Attaching Microfibre Mop Pads

- 1** Your PowerFresh® Slim Steam Mop may have come with two different pads.

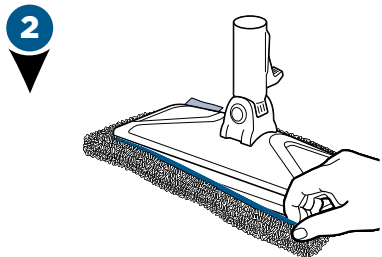


White Mop Pad



Scrubby Mop Pad

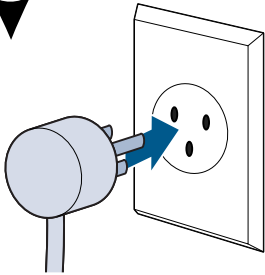
The **White Mop Pad** is best for everyday use on delicate flooring like sealed hardwoods and laminate. The **Scrubby Mop Pad** is recommended for durable surfaces like tile.



To attach Mop Pad, wrap Mop Pad around the bottom of the foot, making sure the gray stitching is located on the front of the foot and the Quick Grip Release™ Tab is located on the back.

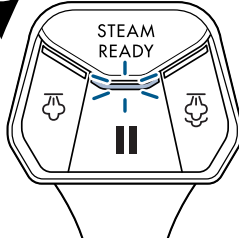
Using SmartSet™ Steam Control

1



Plug machine into a properly grounded outlet.

2



When the unit is plugged in, the STEAM READY light will start to blink.

3



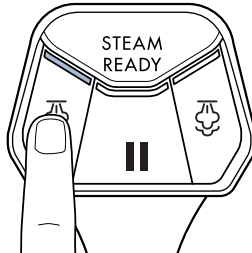
After 30 seconds, the STEAM READY light will turn to a solid light. This means the steam mop is heated and ready to use.

4

Now, select a desired steam level based on your cleaning needs.

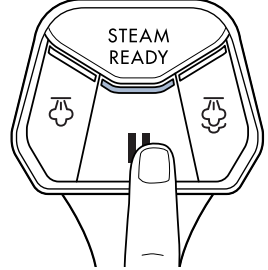


Push the HI STEAM button once to turn ON. Use HI STEAM when cleaning durable floors or sticky messes.



Push the LOW STEAM button once to turn ON. Use LOW STEAM for delicate floors or for light, everyday cleaning.

5



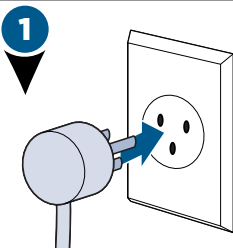
To turn steam OFF, press the PAUSE button once.

NOTE: You must wait until the STEAM READY light is a solid colour before selecting your desired steam level. Upon the first use of your steam mop or first use after refilling the Water Tank, the pump may make a “knocking” sound. This is normal and will diminish after a few seconds.

Cleaning Your Hard Floors

NOTE: Before you clean, thoroughly sweep or vacuum floor prior to cleaning with the PowerFresh® Slim Steam Mop.

YOUR STEAM MOP IS DESIGNED TO CLEAN HARD FLOORING SUCH AS CERAMIC TILE, LAMINATE, MARBLE, STONE, AND SEALED HARDWOOD FLOORS. USE OF YOUR STEAM MOP ON WAXED OR SOME UNWAXED FLOORS MAY RESULT IN A DIMINISHED GLOSSINESS. THE STEAM MOP IS NOT FOR USE ON UNSEALED FLOORS. FOR BEST RESULTS, TEST IN AN INCONSPICUOUS AREA AND CHECK THE CARE INSTRUCTIONS FROM YOUR FLOORING MANUFACTURER. DON'T STAND STATIONARY AND KEEP THE MOP MOVING WHEN DISPENSING STEAM.



1
Plug machine into a properly grounded outlet.

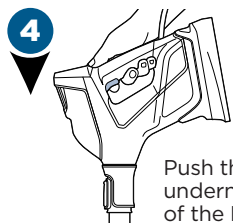


2
Make sure the STEAM READY light is solid before selecting the appropriate steam level based on your hard floor cleaning needs.



3
Step on the side of the foot to recline the body of the machine to begin cleaning.

NOTE: Your Steam Mop may have already come assembled with a Mop Pad on the foot. If not, refer to instructions on page 6 in the "Attaching Microfibre Mop Pads" section to learn how to attach the Mop Pad.



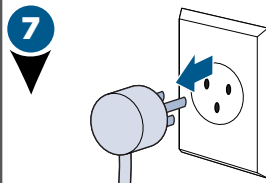
4
Push the trigger underneath the handle of the Handheld Pod to release steam.



5
To easily manoeuvre and clean tight spaces such as baseboards, behind the toilet, and around furniture, take advantage of the swivel steering.



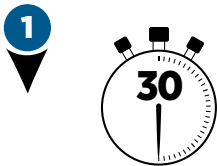
6
For best results to sanitize an area of your floor, use the microfibre cloth pads and slowly and evenly stroke your steam mop back and forth at least three times over the area using continuous steam. Remove the pad after use and wash.



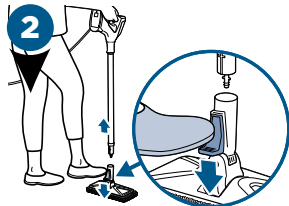
7
When finished cleaning, turn off the machine by pressing the PAUSE button and unplugging the unit.

Above Floor Cleaning

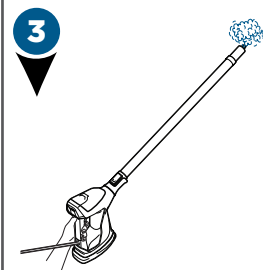
Your BISSELL PowerFresh® Slim Steam Mop has the ability to clean above floors or in tight spaces when using the Extension Wand. It also has the convenience of converting into a handheld steamer when removing the Extension Wand.



1 Wait 30 seconds before changing from mopping to the handheld feature or disconnecting a tool from the Handheld Pod or Extension Wand, make sure steam is no longer coming from the nozzle by releasing the trigger and pressing the PAUSE button.

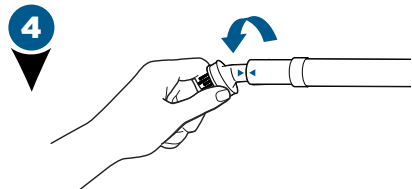


2 To clean above floors using the **Extension Wand**, step down on the pedal located on the back of the steam mop and lift up to release the Extension Wand.

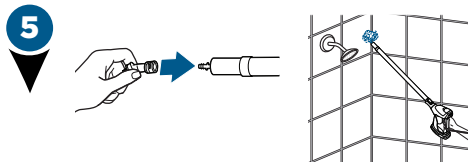


3 Be sure the desired steam setting is selected, then push the trigger located under the handle of the Handheld Pod to release steam.

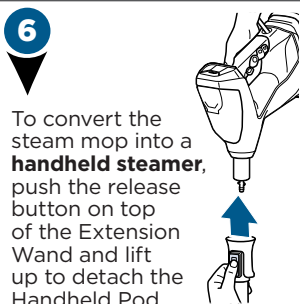
NOTE: Do not step on the back pedal to recline the unit. When removing the Extension Wand from the foot, make sure to lift away from your body as the bottom of the wand may release steam.



4 Align arrow on tool to arrow on end of nozzle (on Extension Wand or handheld steamer) and twist tool into place.



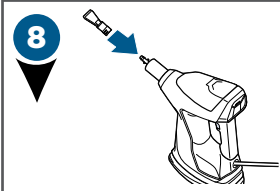
5 Attach desired tool to end of Extension Wand to clean above floors and hard to reach areas such as ceilings, showers, baseboards, and sliding door tracks.



6 To convert the steam mop into a **handheld steamer**, push the release button on top of the Extension Wand and lift up to detach the Handheld Pod from the Extension Wand.



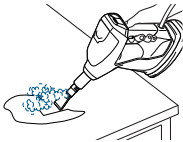
7 **Cleaning Without Tools:**
Push the trigger located under the handle of the Handheld Pod to release steam from the end of the Handheld Pod.



8 **Cleaning With Tools:**
Make sure steam is no longer coming from the nozzle by releasing the trigger and pressing the PAUSE button. Then connect the desired tool.

Above Floor Cleaning (continued)

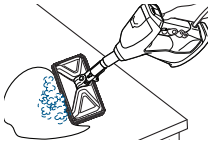
8 Based on your cleaning needs, connect desired tool to the end of the Extension Wand or the Handheld Pod. Select cleaning tools are included with this model.



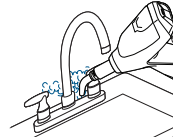
Use the **Flat Scraping Tool** to steam and scrape off those sticky messes on floors, countertops, etc.



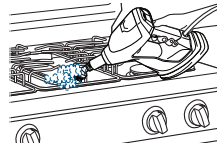
Use the **Grout Tool** to remove dirt and grime from grout.



Use the **Mop Pad Foot** to steam larger areas such as shower walls, countertops, stairs, etc.

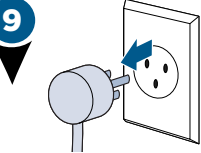


Use the **Angle Concentrator Tool** to steam clean hard-to-reach corners and crevices where dirt and grime build-up in the home, like sinks and faucets.

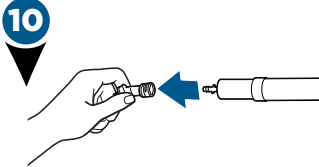


Use the **Green Bristle Brush** to clean around stove tops, sinks, showers, etc.

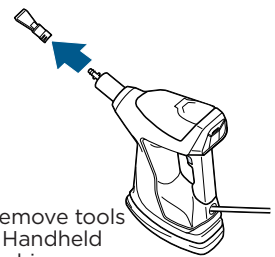
NOTE: Additional tools are available for purchase on BISSELL.com.au.



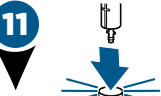
When finished cleaning, turn **OFF** the machine by pressing the **PAUSE** button and unplug the unit.



Wait for the steam to stop, then remove tools from the Extension Wand and/or Handheld Pod before reassembling your machine.

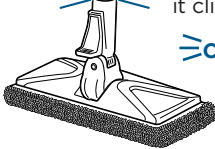


CAUTION: Let steam cool down before removing tools. The end of the Extension Wand or Handheld Pod will be hot.



Insert foot back into the end of the Extension Wand until it clicks into place.

≡click≡



Then, insert the Handheld Pod back into the Extension Wand until it clicks into place.

≡click≡

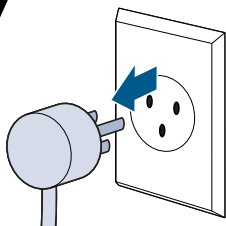


Cleaning Your Steam Mop

⚠️ WARNING

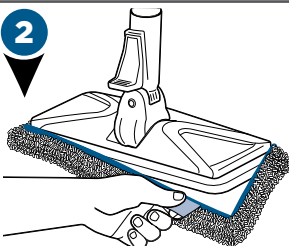
To reduce the risk of fire, electric shock or injury, turn power OFF and disconnect plug from electrical outlet before performing maintenance or troubleshooting.

1



Turn machine OFF and unplug from the grounded outlet.

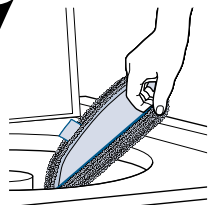
2



Carefully remove Mop Pad using the Quick Grip Release Tab from the mop head.

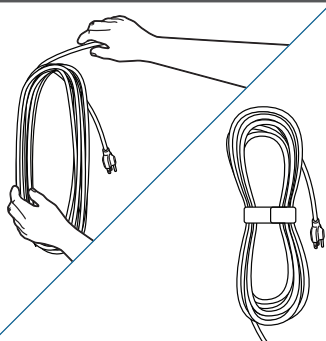
NOTE: Mop Pad and lower assembly may be hot.

3



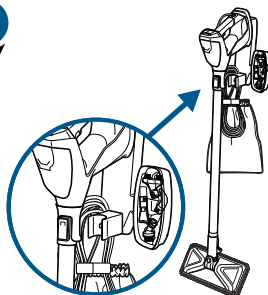
Mop Pads can be machine washed in warm water. Use only non-bleach liquid detergents. Do not use fabric softeners or bleach. For best results, air dry.

4



Wrap the cable around the palm of your hand into a circle. Then, place the wrap strap around the cable and back onto itself to secure.

5



Store on the Wall Mount that is securely mounted to a wall in a protected, dry area. Store with dry Mop Pads as wet Mop Pads may damage wood and other delicate hard floors.

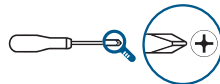
NOTE: Unit does not stand up on its own. If you are not using the Wall Mount, make sure your Steam Mop is stored in a safe place, in the upright position against a firm surface to prevent from falling over.

Setting Up The Wall Mount

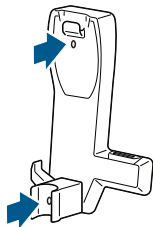
WARNING

To reduce the risk of fire, electric shock or injury, turn power OFF and disconnect plug from electrical outlet before performing maintenance or troubleshooting.

A Phillips-head screwdriver is needed to install the Wall Mount. If installing onto drywall, use plastic anchors with provided screws.

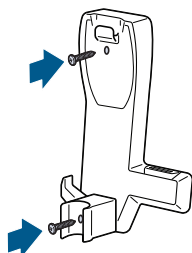


1



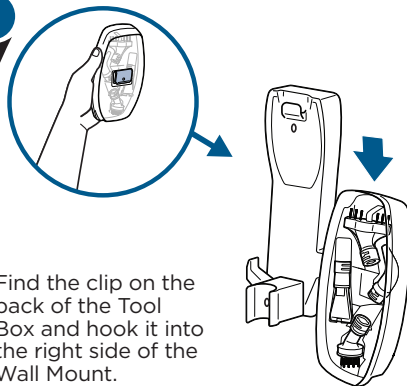
Place the Wall Mount against the wall in the area where you've determined you would like to store your machine.

2



Place each screw through the two holes in the Wall Mount. Use a screwdriver or drill to affix to the wall.

3



Find the clip on the back of the Tool Box and hook it into the right side of the Wall Mount.

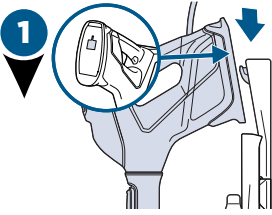
Using The Wall Mount Storage

WARNING

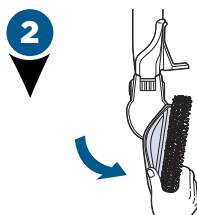
To reduce the risk of fire, electric shock or injury, turn power OFF and disconnect plug from electrical outlet before performing maintenance or troubleshooting.

Your BISSELL PowerFresh® Slim Steam Mop can be stored in 2 different ways using the Wall Mount.

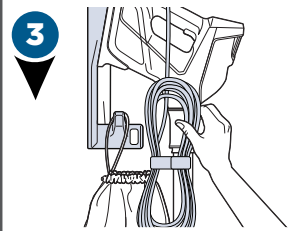
OPTION 1:



Find the opening on the back of the Handheld Pod and hook it onto the top lip of the Wall Mount.

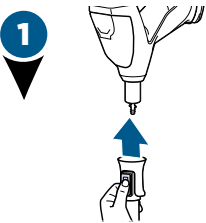


Bend the Mop Pad Foot downward in a slanted position.

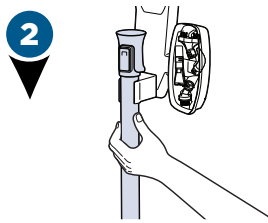


Hang the power cable and tool bag on the left-side hook.

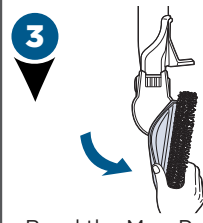
OPTION 2:



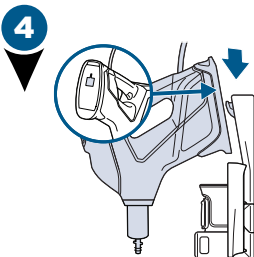
Detach the Extension Wand from Handheld Pod.



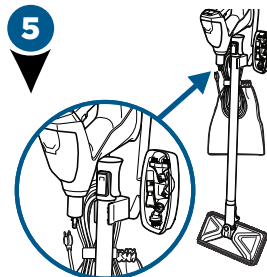
Clip the Extension Wand into the holder.



Bend the Mop Pad Foot downward in a slanted position.



Find the opening on the back of the Handheld Pod and hook it onto the top lip of the Wall Mount.



Hang the power cable and tool bag on the left-side hook.

Troubleshooting

WARNING

To reduce the risk of electric shock, turn power switch OFF and disconnect plug from electrical outlet before performing maintenance or troubleshooting checks.

Problem	Possible causes	Remedies
Reduced steam OR no steam	Water Tank empty.	Refill tank.
	Steam level not selected.	Select steam level by pushing steam level button.
	Wand not installed properly.	Push the wand all the way into the handheld pod until you hear a click.
	Foot not installed properly.	Insert the Extension Wand into foot until you hear a click.
	PAUSE button is pressed.	Once STEAM READY light is solid, select desired steam level (HI or LO) then push the trigger under the handle of the Handheld Pod to release steam.
Streaking	Dirty Mop Pad.	Remove and wash Mop Pad per instructions before further use.
	Use on waxed or oiled floor.	If you have used floor polishes or wax on your floors, steam products may decrease glossiness. Refer to the wax or polish manufacturer. If you don't wax or polish your floors, check the floor care instructions from your flooring manufacturer.
Leaking	Mop Pad is too wet.	Remove and replace with dry Mop Pad and intermittently press the steam trigger for less steam.
	Steam level is too high.	Lower the steam level.
	Crack in unit or Water Tank.	Check to see if there are any cracks on the unit or tank and check to make sure the rubber gasket on the tank is still attached and seated properly in the unit.
Knocking noise	First use or Water Tank is empty.	Fill Water Tank and knocking will diminish after a few seconds.
	Metal tube cannot reach water.	Shake the pod to let the tube reach the water level.

Consumer Guarantee

This Guarantee gives you specific legal rights, in addition to rights you may have under the Australian Consumer Law. If you need additional instruction regarding this Guarantee or have questions regarding what it may cover, please contact your local BISSELL Consumer Services on the details set out below.

Limited 2 Year Guarantee (from the date of purchase by original purchaser)

Subject to whether such loss is reasonably foreseeable, BISSELL will repair or replace (with new, refurbished, lightly used, or remanufactured components or products), at BISSELL's option, free of charge, any defective or malfunctioning part due to manufacturer defect. This Guarantee applies to product used for personal purposes, and not commercial or rental service. This Guarantee does not apply to fans or routine maintenance or consumable components such as filters, belts, brush rolls, etc., damage or malfunction caused by negligence, abuse, neglect, unauthorised repair, or any other use not in accordance with the user's guide. BISSELL recommends that the original packaging be kept for the duration of the Guarantee period in case such need arises within the Guarantee period that the item needs re-packing and transportation.

*CONDITIONS OF THE GUARANTEE

Subject to whether such loss is reasonably foreseeable, BISSELL and its in-country distributors are not liable for incidental or consequential damages of any nature associated with the use of this product.

FOR AUSTRALIAN CONSUMERS ONLY:

OUR GOODS COME WITH GUARANTEES THAT CANNOT BE EXCLUDED UNDER THE AUSTRALIAN CONSUMER LAW. YOU ARE ENTITLED TO A REPLACEMENT OR REFUND FOR A MAJOR FAILURE AND FOR COMPENSATION FOR ANY OTHER REASONABLY FORESEEABLE LOSS OR DAMAGE. YOU ARE ALSO ENTITLED TO HAVE THE GOODS REPAIRED OR REPLACED IF THE GOODS FAIL TO BE OF ACCEPTABLE QUALITY AND THE FAILURE DOES NOT AMOUNT TO A MAJOR FAILURE.

THIS GUARANTEE IS IN ADDITION TO OTHER RIGHTS OR REMEDIES UNDER LAW. NOTHING IN THIS GUARANTEE EXCLUDES, LIMITS, OR MODIFIES ANY LIABILITY OF BISSELL WHICH IS IMPOSED BY LAW, OR LIMITS OR MODIFIES ANY REMEDY AVAILABLE TO THE CONSUMER WHICH IS GRANTED BY LAW. TO MAKE A CLAIM UNDER THIS GUARANTEE CONTACT BISSELL AUSTRALIA PTY LTD (DETAILS ABOVE). CONTACT BISSELL PRIOR TO RETURNING ANY GOODS. WHERE AGREED, BISSELL WILL REIMBURSE REASONABLE POSTAGE / HANDLING COSTS (IF ANY) FOR RETURNING GOODS TO BISSELL. TO CLAIM EXPENSES INCURRED IN MAKING A CLAIM UNDER THIS GUARANTEE PLEASE PROVIDE BISSELL WITH A COPY OF THE RECEIPT OF THE EXPENSES BY EMAIL OR POST.

Consumer Care

If your BISSELL product should require service or to claim under our limited guarantee, please contact us as follows:

Website and Email:

www.bissell.com.au
www.bissell.co.nz

Telephone:

Australia: 1300-247-735
New Zealand: 0800-247-735

Write:

BISSELL AUSTRALIA PTY LIMITED
42 Rocco Dr.
Scoresby 3179
Victoria
Australia

Replacement parts and accessories are available for purchase. To purchase visit www.BISSELL.com.au.

Visit the BISSELL website: www.BISSELL.com.au

When contacting BISSELL, have model number of cleaner available.

Please record your Model Number: _____ Please record your Purchase Date: _____

NOTE: Please keep your original sales receipt. It provides proof of the date of purchase in the event of a Guarantee claim. See Guarantee for details.



©2018 BISSELL Homecare, Inc
Grand Rapids, Michigan
All rights reserved. Printed in China
Part Number 161-4140 04/18 RevB
Visit our website at: www.BISSELL.com